

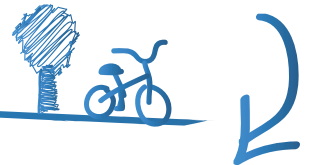
Our Program

Our cities are changing fast. Issues of climate change and sustainable transportation are on the front pages of our newspapers and citizens have begun to realize the importance of “going green” and demanding more livable environments.

Livable Streets Education (LSE) is a program designed to help classroom teachers and schools weave pertinent ideas about urban livability (traffic calming, environmental improvements, alternative transportation, safe routes to schools) into many facets of their school day curriculum. By infusing the curricula with “green” ideas and tools for evaluating environments, teachers help students learn how to connect their school day activities to exciting issues. Students (and in turn their families) will also be able to translate these ideas into recommendations for calmer, more livable streets, and become forces for change in their communities.



Our projects are designed for students at many grade levels. Kindergarten through Fifth Grade learning units feature connections to literacy, math, science, multiple art disciplines and social studies skills. Projects for Middle School students include science, math, technology and arts. High School programming centers around urban design, environmental stewardship and community service.



FREE DOWNLOADABLE CURRICULUM

Working closely with educators, community-based organizations and cultural institutions, LSE creates Learning Guides for topics with lesson plans, teacher’s guides and worksheets to use in the classroom. These projects cover a wide range of interests and age ranges and are often piloted in schools before they are published on our website for use in classrooms. Professional development is available to train teachers who are interested in working with these materials in their classrooms.

RESIDENCIES

LSE works in public and independent schools in targeted areas throughout New York City. We collaborate with motivated educators to develop programming which combines educational modes-of-inquiry with livability topics specific to each school. Our residencies are eight to ten weeks in length and involve TOPP teaching specialists and classroom teachers working together to create curriculum that is replicable in future years.

SPECIAL PROJECTS

LSE connects schools with city and community-based organizations to do specialized programming - from helping students advocate for their own park or community garden, to beautifying their street, to winning a speed hump on their block, we will work to bring these improvements to neighborhoods, one school at a time.



349 West 12th Street #3
New York, NY 10014
www.theopenplanningproject.org

Kim Wiley-Schwartz
Livable Streets Education Director
kwileyschwartz@openplans.org