



we're walking here nyc

ELEMENTARY SCHOOL

**Step 1: Who's Walking Here?**

---

# **Student Commute Recording Kit:**

## **WALL CHART**

- **Step 1: Who's Walking Here?**  
Step 2: Understanding the Numbers  
Step 3: Sharing your Message

## Student Commute Wall Chart

### PURPOSE

Use this large wall chart to help your student body record how they commute to school over a three day period. These numbers will be used for Step 2.

### SIZE AND PLACEMENT

*[See diagram on following page for a suggested layout of the wall chart.]*

The wall chart should be placed in a prominent, public location where all students have access to it. The entrance to your school or outside of the auditorium or cafeteria are good locations. It's best if they can place a mark as they arrive at the beginning of the school day.

Make the chart big enough to fit the provided chart title - or even bigger! At LSE, we think a bigger chart is easier for lots of students to access at the same time. Plus, it's easier to read from a distance and simply more fun!

**TIP:** *You will need to put up a NEW PIECE of paper each of the three days that you are taking the survey so that you have separate numbers for each day.*

### WORKING WITH THE NUMBERS

1. It will take some time to tally up the numbers from the wall chart. The class should total the raw numbers in each category for each day (i.e. Walking - Day One: 255, Day Two: 414, Day Three: 365 - Total Walking: 1034). You will need to do the same for all modes of transportation.
2. After the numbers have been "crunched", take some time to review the results and discuss how many students walk to your school each day. Remember to include those who walk to transit to get the full picture.

3. Recommended: Follow this step with the Bar Graph exercise provided at <http://streetseducation.org/walkingschools> as part of Step Two.

### UPLOAD THE DATA - STEP TWO

When you are finished collecting data, be sure to upload the results on our website. You DO NOT need to add up the totals in order to fill out our easy-to-use online form. This key step will automatically register you in the city-wide contest. Don't forget to look up our online Step Two lesson plans and choose a lesson plan (or two) that helps your students analyze the data and learn about the streets around the school.

### CONTENTS OF THIS KIT

- **Chart title:** Print out the words and place them above the chart as the title.
- **Icons:** Print out these icons and use them as labels for the chart.

### OTHER MATERIALS

You will need a few other materials, which are not provided in this kit. These include:

- Butcher paper (or some type of backing for the entire chart.)
- Hang colorful markers or provide stickers to tally the results. Choose the best way for each student to "make their mark."

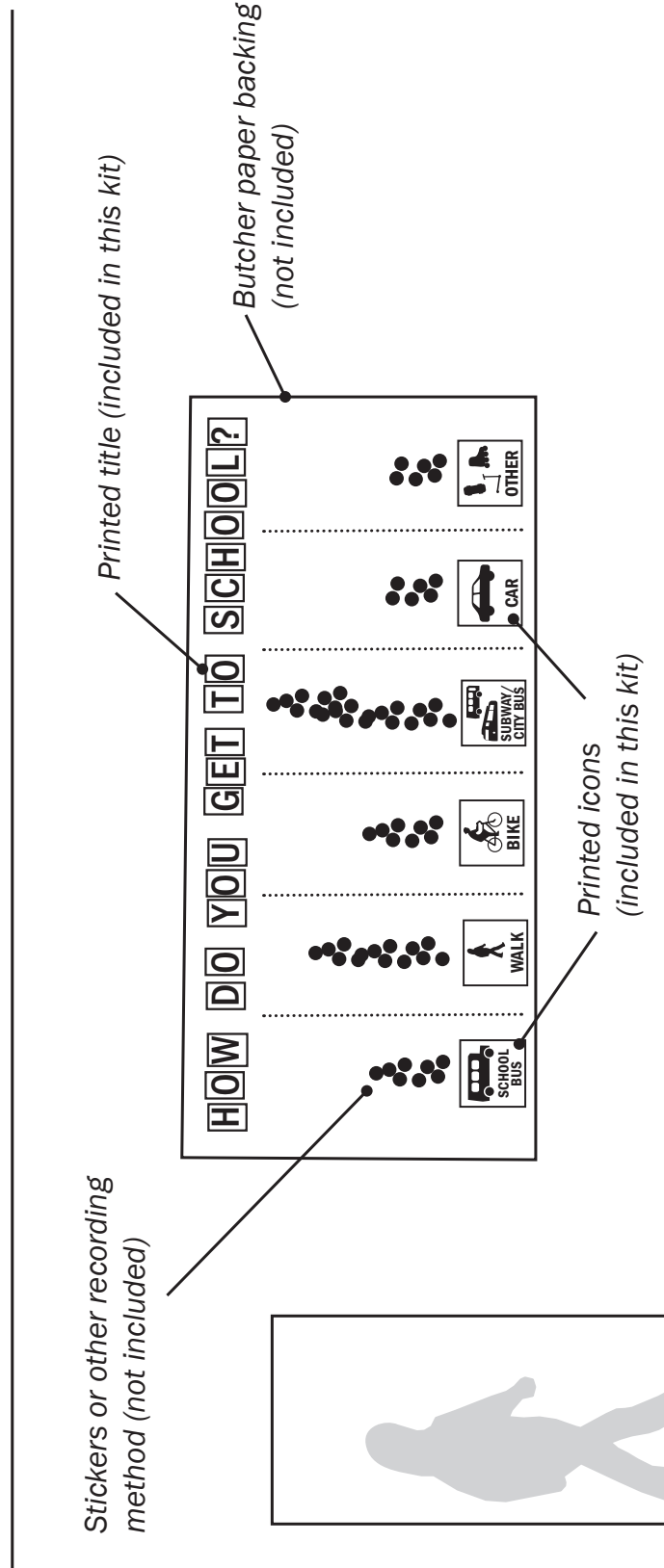
materials

- Step 1: Who's Walking Here?
- Step 2: Understanding the Numbers
- Step 3: Sharing your Message

# we re walking here nyc

## WALL CHART DIAGRAM

*TIP: Make sure it's hung low enough for the littlest ones!*

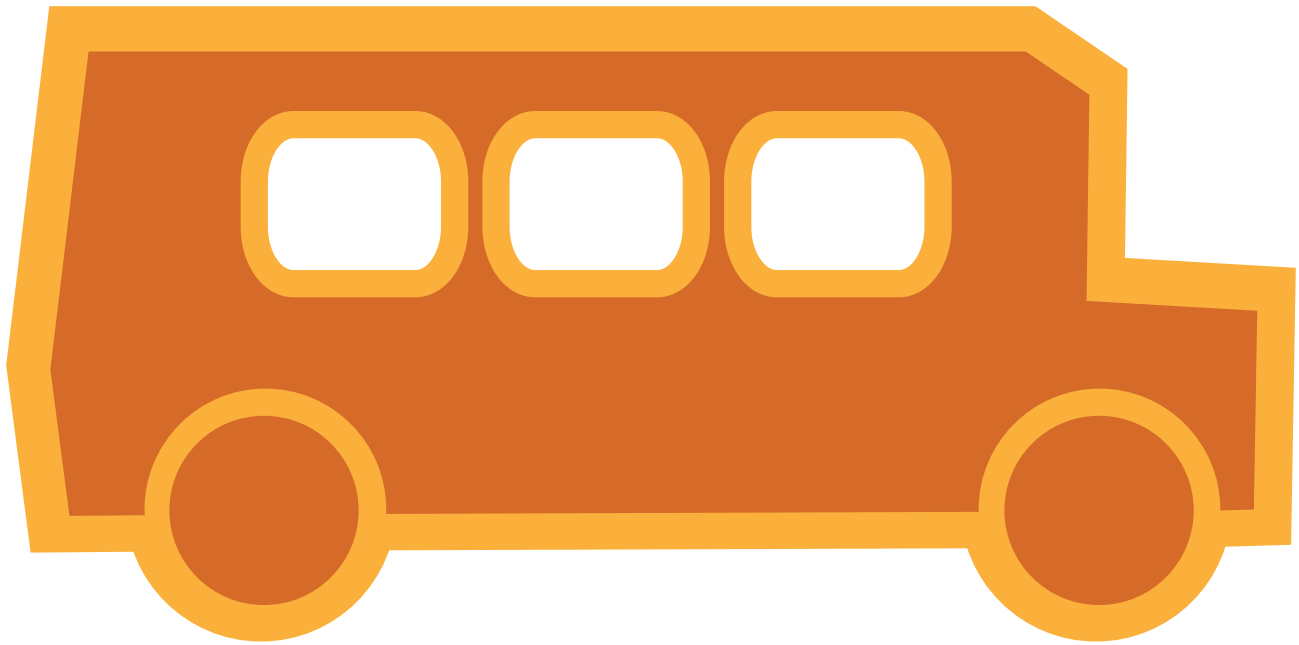




**BIKE**



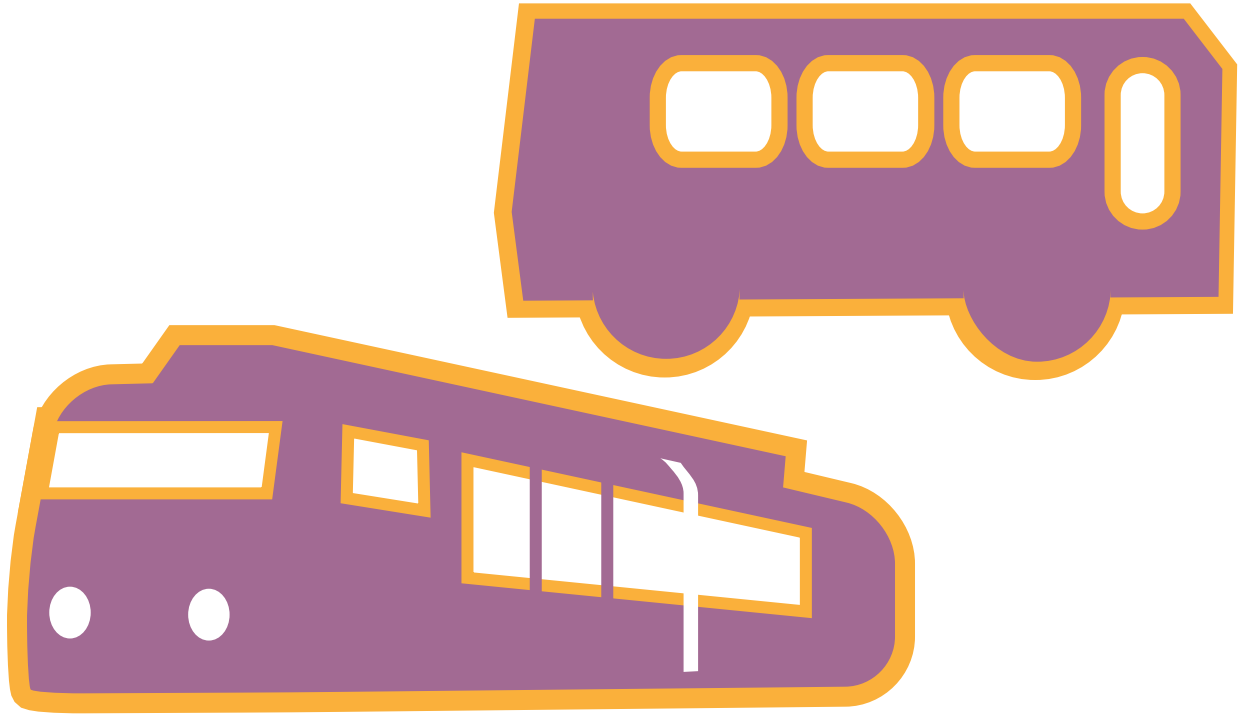
**WALK**



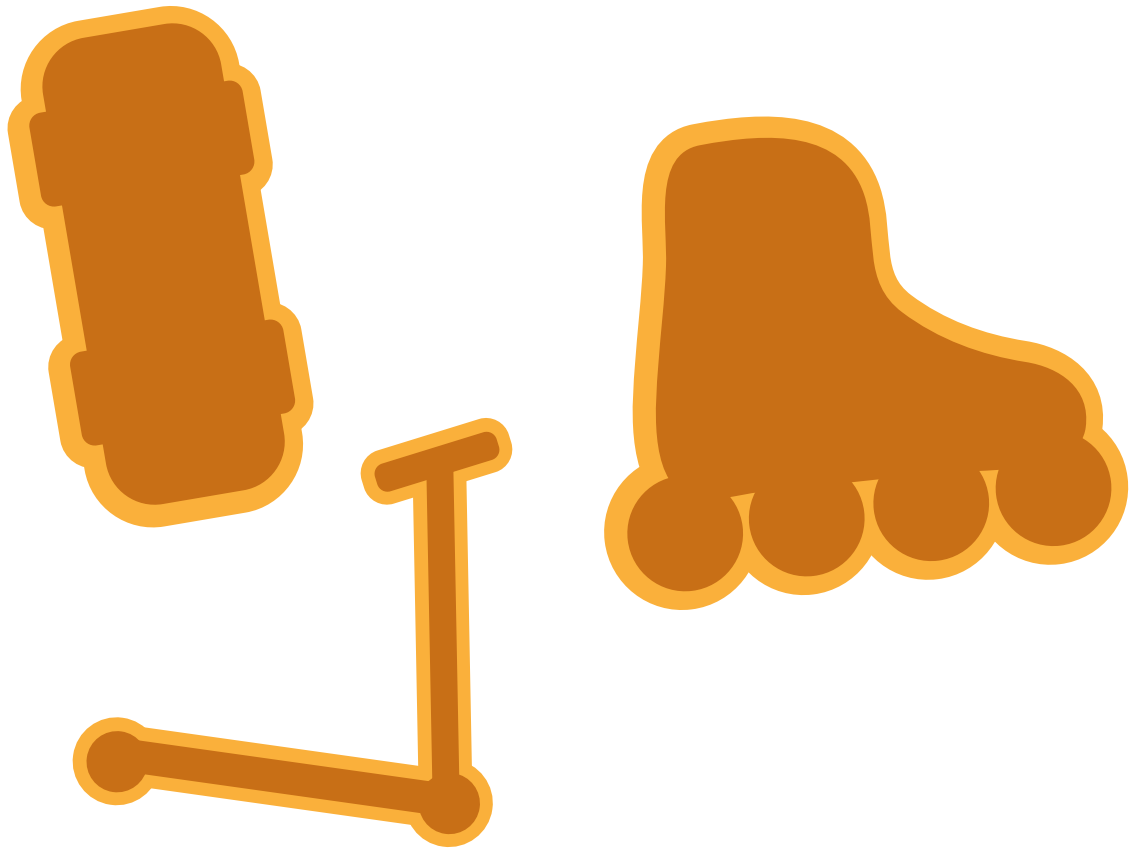
# SCHOOL BUS



**CAR**



# SUBWAY / CITY BUS



**OTHER**

**HOW**

**DO**

**YOU**

**GET**

**TO**

# STREET SCHOOL